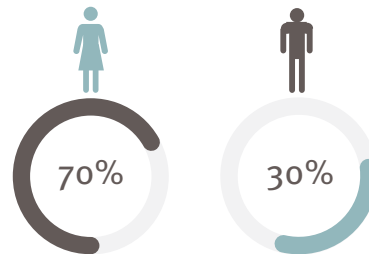


# Epionce® Renewal Calming Cream Improves Symptoms of Eczema and Dry Skin

## Results of a two-cell, single center, double-blind, randomized clinical trial

The two cells were testing prototypes of the Epionce Renewal Calming Cream for proof of concept (N=22). The formulation of Cell 2 (N=10) is the Epionce Renewal Calming Cream. Subjects suffering from at least one moderate or severe eczematous lesion were treated three (3) times daily. 70% of the subjects were female; 30% were male. 40% of the subjects were Black/African American and 60% were Caucasian. Fitzpatrick Skin Types II - V were assessed.

<b>The Investigator's Global Improvement Assessment</b> <i>was significantly improved by Day 8</i>	<b>Itching Reduced 81.3%</b> <i>Mean Change at Day 22</i>
---	--



## Clinical Grading

Results after 8 and 22 days of treatment with Epionce Renewal Calming Cream. The Epionce Renewal Calming Cream produced a statistically significant improvement in scores for pruritus, erythema and dryness/scaling at Days 8 and 22 when compared to baseline scores.

Parameter	Day 8	Day 22
Pruritus	58.3	81.3
Erythema	38.9	54.2
Dryness/Scaling	57.8	67.5

All statistically significant

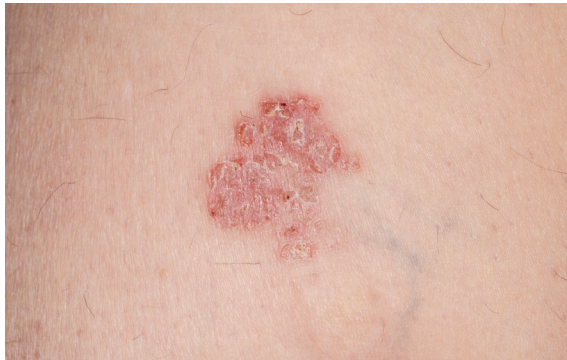
**Mean Change**  
*(% Improvement)*

### Questions?

Contact Us For Additional Clinical Study Data  
T: (866) 374 6623 | info@epionce.com

Clinical study data on file. Episciences, Inc.  
epionce.com  
Rev. 9/2023

# Epionce® Renewal Calming Cream Improves Symptoms of Eczema and Dry Skin



BASELINE



22 DAYS



## Patient Experience

*"I have used several Epionce products over the years . . . the Renewal Calming Cream is one of my favorite Epionce products. This product is very rich and creamy . . . and it feels so good on the skin. It doesn't leave a greasy feeling and I am able to wear it under my makeup. I have very sensitive skin and this product soothes my skin and helps with the sensitivity. I actually look forward to applying it every day."*

– Suzanne P.

## Key Ingredients: Renewal Calming Cream



Colloidal Oatmeal  
0.03%



Safflower Extract



Onion Bulb Extract



Meadowfoam Extract



Rosa Canina Extract



Apple Fruit Extract



White Water Lily



Glycerin + Petrolatum

## Clinical Relief For Eczema

### Renewal Calming Cream

- Relieves dry, itchy skin; soothes irritated and highly sensitized skin
- Formulated with cholesterol and ceramides to help protect the skin barrier
- Optimally hydrates skin on the face and body